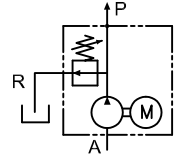


Gear pump units



202100000

For use in circulation and progressive lubrication systems.

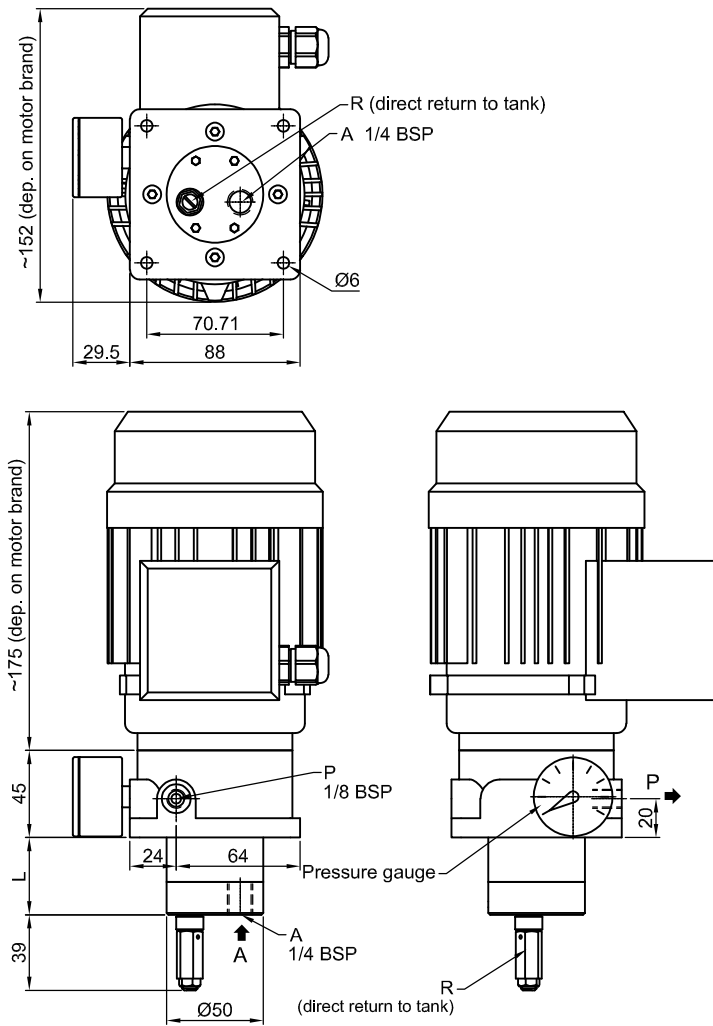
For mounting on tanks in vertical position (pump downwards). It can be mounted in a horizontal position as long as the oil does not cover the pump (consult us if that's the case).

Flow rate..... 0.06 to 0.5 l/min
 Maximum pressure.....35 bar
 Lubricant..... mineral and synthetic oils
 Lubricant temperature..... -15°C ÷ +70°C
 Operating viscosity.....17 ÷ 980 cSt
 Suction height.....700 mm
 Maximum length suction tube.....1000 mm
 (use maximum section)
 Motor mounting arrangement.....B14/T56 Ø80
 Voltage / Frequency / kW / rpm:

Single-phase
 230V-50/60Hz-0.075kW-1500rpm
 Three-phase
 230/400V-50/60Hz-0.090kW-1500rpm
 Operation mode..... S1

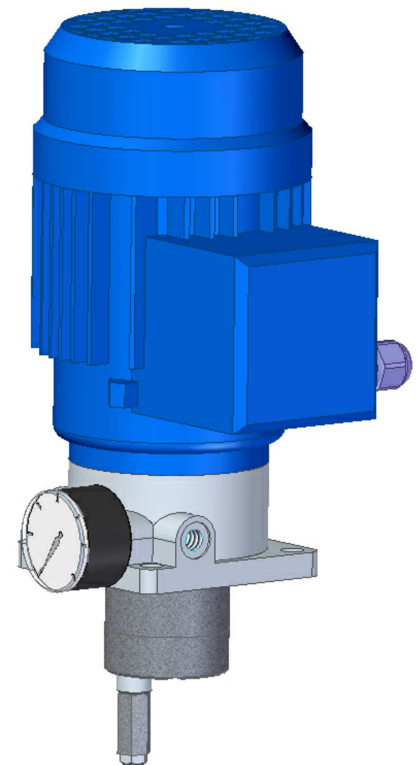
The motors mounted using a standard way are from known and approved commercial firms. In case you would have preference on a particular brand please consult us or specify your preference in your order. Before start up check the rotation direction.

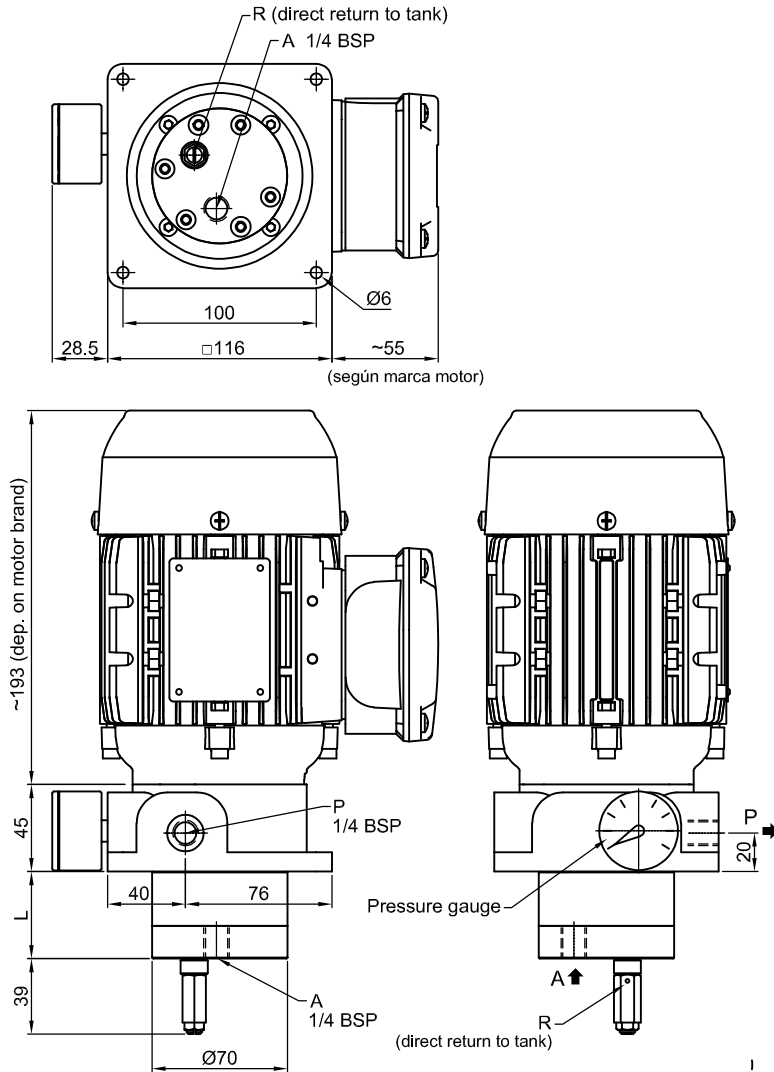
A = suction 1/4 BSP
 P = pressure outlet 1/8 BSP
 R = pressure relief valve



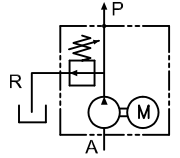
GF11/A-1/ (X) - (X) (X) - (X) (X)

X	Flow rate l/min	L	X	Pressure relief valve	X	Pressure gauge	X	Motor brand	X	Voltage
0	0.06	37	0	Without	0	Without	1	Standard	2	Single-phase 230V
1	0.12	37	2	6 bar	1	With	2		3	Three-phase 230/400V
2	0.18	37	3	10 bar	0	Without	0			
3	0.25	40	4	15 bar	2	0-10 bar	2			
4	0.36	40	5	20 bar	0	Without	0			
5	0.50	40	6	25 bar	3	0-12 bar	0			
			7	30 bar	0	Without	0			
			8	35 bar	4	0-16 bar	0			
					5	0-25 bar	0			
					6	0-40 bar	0			
					7	0-40 bar	0			
					8	0-40 bar	0			





Gear pump units



202200000

For use in circulation and progressive lubrication systems.

For mounting on tanks in a vertical position (pump downwards). It can be mounted in a horizontal position as long as the oil does not cover the pump (please consult us if that's the case).

Flow rate.....0.06 to 2 l/min
 Max. pressure:.....From 0.06 to 0.5 l/min.....35 bar
 From 0.75 to 2 l/min.....30 bar
 Lubricant..... mineral and synthetic oils
 Lubricant temperature..... -15°C + +70°C
 Operating viscosity:
 from 0.06 to 0.5 l/min..... 17 + 980 cSt
 from 0.75 to 2 l/min..... 17 + 800 cSt
 Suction height..... 700 mm
 Maximum length suction tube..... 1000 mm
 (use maximum section)
 Motor mounting arrangement.....B14/T63 Ø90
 Voltage / Frequency..... 230/400V-50/60Hz
 kW / rpm:.....0.06 to 1 l/min.....0.18kW - 1500rpm
 1.5 and 2 l/min.....0.25kW - 2800rpm
 Operation mode..... S1
 Energy efficiency..... IE2

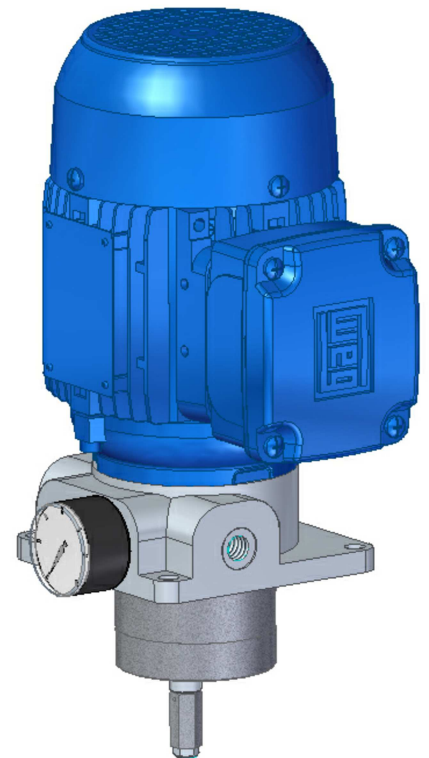
The motors mounted using a standard way are from known and approved commercial firms. In case you would have preference on a particular brand please consult us or specify your preference in your order. Before start up check the rotation direction.

A = suction 1/4 BSP
 P = pressure outlet 1/4 BSP
 R = pressure relief valve

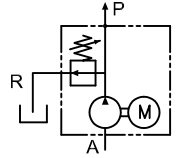
GF12/A-1 / (X) - (X) (X) - (X)

X	Flow rate l/min	L	Motor charact.	X	Pressure relief valve	X	Pressure gauge	X	Motor brand
0	0.06	37	0.18kW 1500rpm	0	Without	0	Without	1	Standard
1	0.12	37		1	With	1	With		
2	0.18	37		2	6 bar	0	Without		
3	0.25	40		3	10 bar	2	0-10 bar		
4	0.36	40		4	15 bar	0	With		
5	0.50	40		5	20 bar	3	0-12 bar		
6	0.75	42		6	25 bar	0	With		
7	1.00	45	0.25kW 2800rpm	7	30 bar	4	0-16 bar		
8	1.50	42		8	35 bar	5	0-25 bar		
9	2.00	45		6	25 bar	0	With		
				6	25 bar	6	0-40 bar		
					7	30 bar	0	With	
					7	30 bar	6	0-40 bar	
					8	35 bar	0	With	
					8	35 bar	6	0-40 bar	

Please indicate any preference on a particular brand.



Gear pump units



202300000

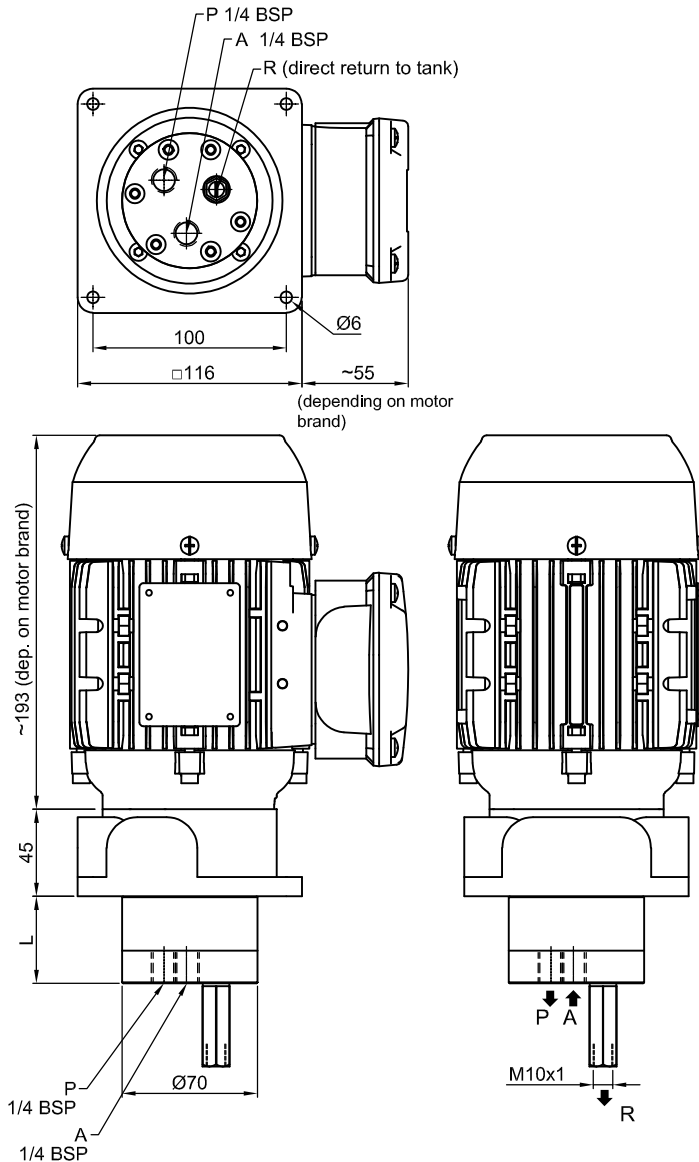
For use in circulation and progressive lubrication systems.

For mounting on tanks in a vertical position (pump downwards). It can be mounted in a horizontal position as long as the oil does not cover the pump (please consult us if that's the case).

- Flow rate.....0.06 to 2 l/min
- Max. pressure:.....From 0.06 to 0.5 l/min..... 35 bar
 From 0.75 to 2 l/min.....30 bar
- Lubricant..... mineral and synthetic oils
- Lubricant temperature..... -15°C ÷ +70°C
- Operating viscosity:
- From 0.06 to 0.5 l/min..... 17 ÷ 980 cSt
- From 0.75 to 2 l/min..... 17 ÷ 800 cSt
- Suction height.....700 mm
- Maximum length suction tube.....1000 mm
 (use maximum section)
- Motor mounting arrangement..... B14/T63 Ø90
- Voltage / Frequency.....230/400V-50/60Hz
- kW / rpm:.....0.06 to 1 l/min..... 0.18kW - 1500rpm
 1.5 and 2 l/min.....0.25kW - 2800rpm
- Operation mode..... S1
- Energy efficiency..... IE2

The motors mounted using a standard way are from known and approved commercial firms. In case you would have preference on a particular brand please consult us or specify your preference in your order. Before start up check the rotation direction.

- A = Suction 1/4 BSP
- P = Pressure outlet 1/4 BSP
- R = Pressure relief valve



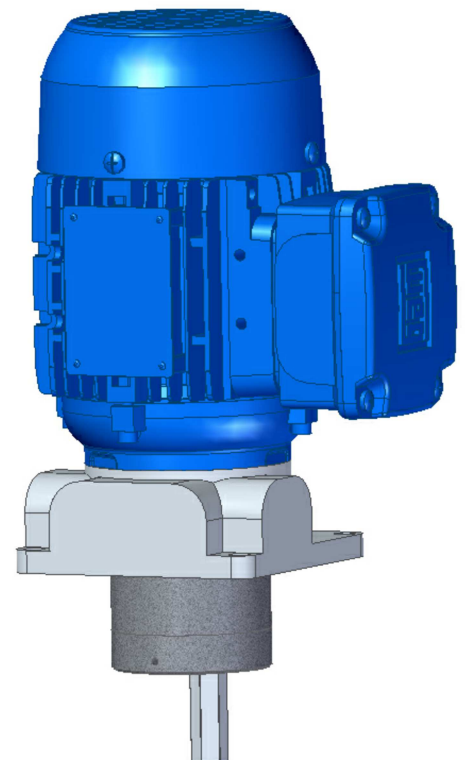
GF12/B-1 / (X) - (X) - (X)

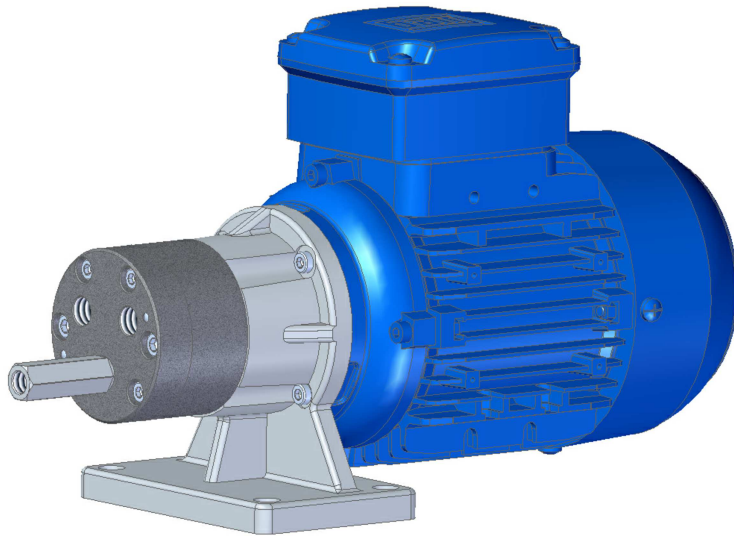
X	Flow rate litres/minute	L	Motor characterist.
0	0.06	37	0.18kW 1500rpm
1	0.12	37	
2	0.18	37	
3	0.25	40	
4	0.36	40	
5	0.50	40	
6	0.75	42	
7	1.00	45	0.25kW 2800rpm
8	1.50	42	
9	2.00	45	

X	Pressure relief valve
0	Without
2	6 bar
3	10 bar
4	15 bar
5	20 bar
6	25 bar
7	30 bar
8	35 bar

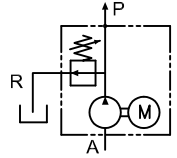
X	Motor brand
1	Standard

Please indicate any preference on a particular brand.





Gear pump units



202400000

For use in circulation and progressive lubrication systems.

For mounting on tanks in a horizontal position. It can be mounted in a vertical position with the pump downwards

Flow rate..... 0.06 at 2 l/min
 Max. pressure:.....From 0.06 to 0.5 l/min..... 35 bar
 From 0.75 to 2 l/min..... 30 bar
 Lubricant..... mineral and synthetic oils
 Lubricant temperature.....-15°C ÷ +70°C
 Operating viscosity:
 From 0.06 to 0.5 l/min..... 17 ÷ 980 cSt
 From 0.75 to 2 l/min..... 17 ÷ 800 cSt
 Suction height.....700 mm
 Maximum length suction tube.....1000 mm
 (use maximum section)
 Motor mounting arrangement..... B14/T63 Ø90
 Voltage / Frequency.....230/400V-50/60Hz
 kW / rpm:.....0.06 at 1 l/min.....0.18kW - 1500rpm
 1.5 y 2 l/min..... 0.25kW - 2800rpm
 Operation mode..... S1
 Energy efficiency..... IE2

The motors mounted using a standard way are from known and approved commercial firms. In case you would have preference on a particular brand please consult us or specify your preference in your order.

A = Suction 1/4 BSP
 P = Pressure outlet 1/4 BSP
 R = Pressure relief valve (foresee return to tank)

GF13/B-1 / X - X - X

X	Flow rate litres/minute	L	Motor characterist.	X	Pressure relief valve	X	Motor brand
0	0.06	37	0.18kW 1500rpm	0	Without	1	Standard
1	0.12	37		2	6 bar		
2	0.18	37		3	10 bar		
3	0.25	40		4	15 bar		
4	0.36	40		5	20 bar		
5	0.50	40		6	25 bar		
6	0.75	42		7	30 bar		
7	1.00	45	0.25kW 2800rpm	8	35 bar		
8	1.50	42					
9	2.00	45					

Please indicate any preference on a particular brand.

